

IBPS RRB Clerk Prelims 2022 Memory Based Paper

Direction (1-5): In these questions, relationship between different elements is show in the statements. The statements are followed by conclusions. Study the conclusions based on the given statements and select the appropriate answer:

- (a) If only conclusion I follows.
- (b) If only conclusion II follows.
- (c) If either conclusion I or II follows.
- (d) If neither conclusion I nor II follows.
- (e) If both conclusions I and II follow.

Q1. Statements: $F > R \geq T = E > W \leq Q$

Conclusions: I. $E < F$ II. $Q \geq T$

Q2. Statements: $W = G \geq T = C \leq V \leq B$

Conclusions: I. $W > C$ II. $W = T$

Q3. Statements: $K > I \geq G > F \leq T < R$

Conclusions: I. $K > R$ II. $R > G$

Q4. Statements: $Q > O \geq P = K < U \leq Z$

Conclusions: I. $Z > K$ II. $Q > U$

Q5. Statements: $K < G \leq D < C > R \leq Y$

Conclusions: I. $C > G$ II. $K < D$

Directions (6-10): Study the following sequence and answer the given questions.

B @ 9 # C 1 £ 2 8 D µ 7 K 5 L E % U & F € M G 4 ! 3 Z ? 6 X ¥ P 5 A © 6

Q6. Which of the following element is sixth to the left of the eighth element from the right end of the given arrangement?

- (a) M
- (b) 4
- (c) G
- (d) 3
- (e) None of these

Q7. How many such letters are there in the given series which are immediately preceded by a symbol and immediately followed by a number?

- (a) Two
- (b) Four
- (c) None
- (d) Three
- (e) More than four

BILINGUAL

Video Solutions

BANK PRIME

TEST PACK

IBPS RRB, SBI, IBPS PO | Clerk & Others

1200+ TOTAL TESTS

Q8. If all the letters are dropped in the given series, which element will be eleventh from the right end?

- (a) 4
- (b) %
- (c) &
- (d) 5
- (e) None of these

Q9. Which of the following element is fourth to the right of the ninth element from the left end of the given arrangement?

- (a) 8
- (b) K
- (c) E
- (d) P
- (e) L

Q10. How many such symbols are there in the given series which are immediately preceded by a vowel and immediately followed by a number?

- (a) None
- (b) One
- (c) Two
- (d) Three
- (e) More than three

Directions (11-15): Study the information given below and answer the given questions.

Six persons were born on two different dates either 11 or 22 of three different months viz. September, October and November. F was born on an odd date in the month which has even days. Two persons were born between Q and F. More than two persons were born between Q and T. R was born before D and after B.

Q11. How many persons were born after R?

- (a) Two
- (b) One
- (c) None
- (d) Three
- (e) None of these

Q12. Who was born on 11th November?

- (a) Q
- (b) F
- (c) D
- (d) T
- (e) None of these

Q13. Which of the following statement is true?

- I. More than four persons were born after T
 - II. Two persons were born between B and D
 - III. At least one person was born after F
- (a) Both II and III
 - (b) Only III
 - (c) Both I and II
 - (d) Only I
 - (e) All I, II and III

Q14. Who among the following was born in October?

- (a) R
- (b) Q
- (c) D
- (d) Both R and D
- (e) Both Q and D

Q15. ___ persons were born after D.

- (a) One
- (b) Four
- (c) Three
- (d) Two
- (e) None of these

Directions (16-18): Study the following information carefully and answer the questions given below:
There are seven members in a family in which two are married couples. S is grandmother of K. B is father-in-law of A. C is mother of D. J is brother of K and his mother is D. J and K are unmarried.

Q16. How is S related to D?

- (a) Mother
- (b) Sister
- (c) Mother-in-law
- (d) Grandmother
- (e) None of these

Q17. How is C related to K?

- (a) Mother
- (b) Mother-in-law
- (c) Paternal grandmother
- (d) Maternal grandmother
- (e) Can't be determined

Q18. How many female members in the family?

- (a) Two
- (b) Four
- (c) Three
- (d) Five
- (e) Can't be determined

Q19. In the number '95273524', how many pairs of the digits have the same digits between them (both forward and backward direction) as in the number series?

- (a) Four
- (b) Two
- (c) One
- (d) Three
- (e) More than four

Direction (20-24): Study the following information carefully and answer the questions given below:

Seven people sit around a circular table and they all are facing the center. One person sits between M and K. N sits 3rd to the left of K. D is neither an immediate neighbour of M nor N. G sits 2nd to the right of D. O sits 2nd to the left of L.

Q20. Who sits 4th left of D?

- (a) M
- (b) K
- (c) O
- (d) N
- (e) None of these

Q21. What is the position of G with respect to N?

- (a) 3rd to the left
- (b) 2nd to the right
- (c) 3rd to the right
- (d) Immediate left
- (e) None of these

Q22. How many persons sit between O and M when counted to the left of M?

- (a) More than four
- (b) Three
- (c) One
- (d) Two
- (e) None



Bilingual

Special Offer

**IBPS 2022
RRB CLERK
PRELIMS**

with Video Solutions

55+ TOTAL TESTS

Q23. Which of the following sits 2nd to the right of K?

- (a) G
- (b) O
- (c) M
- (d) L
- (e) None of these

Q24. Which of the following statement is true?

- I. N and O are immediate neighbors
 - II. D sits 2nd to the left of O
 - III. One person sits between L and G
- (a) Both II and III
 - (b) Only I
 - (c) Only III
 - (d) Both I and II
 - (e) None is true

Q25. If it is possible to make a meaningful word with the second, fourth, fifth, and eighth letters of the word 'ACHIEVED', then which of the following will be the third letter from the right end of that meaningful word? If no meaningful word can be made, give 'X' as the answer. If more than one meaningful word can be made, give 'Y' as the answer.

- (a) X
- (b) I
- (c) Y
- (d) D
- (e) C

Directions (26-30): Study the following questions and answer them by referring to the word sequence given below:

LAB FOX SIP BET WET

Q26. When first and third letter of each word is interchanged, then how many meaningful words will be formed?

- (a) Three
- (b) One
- (c) Two
- (d) Five
- (e) None

Q27. If each Consonant is changed to its previous letter and each vowel is changed to its next letter according to the English alphabetical series, then how many words contain at least one vowel?

- (a) None
- (b) More than three
- (c) Two
- (d) Three
- (e) None of these

Q28. If words are arranged according to the alphabetical series (as in the English dictionary) from left to right, which word will be third from the right end?

- (a) LAB
- (b) SIP
- (c) BET
- (d) WET
- (e) FOX

Q29. If each letter in each word is arranged according to the English alphabetical series from left to right, then how many meaningful words will be formed?

- (a) Three
- (b) One
- (c) Four
- (d) Two
- (e) None

Q30. How many letters between 1st letter of 3rd word from right end and 2nd letter of 2nd word from left end according to the English dictionary?

- (a) Eight
- (b) More than eleven
- (c) Three
- (d) Four
- (e) None of these

Direction (31-34): Study the following information carefully and answer the questions given below:
Seven persons A, B, C, D, E, F and G live in a building of 7 floors but not necessarily in the same order. The ground floor is numbered as 1st floor, just above floor is numbered as 2nd floor and so on till the topmost floor is numbered as 7th floor.

Less than three persons live above F. One floor gap between E and F who lives above E. G lives just above B who lives on even numbered floor. The number of floors above D is same as the number of floors below A. C lives below A.

Q31. How many persons live below G?

- (a) None
- (b) Two
- (c) Six
- (d) Four
- (e) None of these

Q32. Who lives on the 5th floor?

- (a) D
- (b) A
- (c) F
- (d) G
- (e) C

Q33. The number of persons live above B is same as the number of persons live below _____.

- (a) E
- (b) A
- (c) F
- (d) C
- (e) None of these

Q34. Which of the following statement is true?

I. F does not live on even floor

II. E lives above D

III. G lives on the 3rd floor

- (a) Only I
- (b) Only II
- (c) Both I and II
- (d) Both II and III
- (e) None is true

Q35. If each vowel of the word "QUALITY" is changed to the next letter of the English alphabets and each consonant is changed to the previous letter of the English alphabet, and then the alphabets thus formed are arranged in alphabetical order from left to right, which of the following will be fourth from the right end?

- (a) K
- (b) P
- (c) V
- (d) J
- (e) None of these

Direction (36-39): In each of the questions below, some statements are given followed by some conclusions. You have to take the given statements to be true even if they seem to be at variance with commonly known facts. Read all the conclusions and then decide which of the given conclusions logically follows from the given statements disregarding commonly known facts.

- (a) If only conclusion I follows.
- (b) If only conclusion II follows.
- (c) If either conclusion I or II follows.
- (d) If neither conclusion I nor II follows.
- (e) If both conclusions I and II follow.

Q36. Statements: Only a few Grapes are Mango.

No Mango is Banana.

Only a few Banana are Papaya.

Conclusions: I. Some Mango are Papaya.

II. No Mango is Papaya.

Q37. Statements: Only a few City are Town.

All Town are Metro.

Conclusions: I. Some City are Metro.

II. All City being Town is a possibility.

TEST SERIES

BILINGUAL

VIDEO SOLUTIONS



IBPS 2022

RRB PO

PRELIMS + MAINS

95+ Total Tests | eBooks

Q38. Statements: Some Dolphin are Turtle.

All Turtle are Rabbit.

A few Owl are Rabbit.

Conclusions: I. All Dolphin are Owl.

II. Some Dolphin are not Owl.

Q39. Statements: Only a few River are Mountain.

No Mountain is Concrete.

Some Concrete are not Bricks.

Conclusions: I. Some River are being Concrete is a possibility.

II. All Mountain can be river.

Q40. Find the odd one out?

(a) CBF

(b) KJM

(c) POS

(d) VUY

(e) SRV

Q41. If $y^2 - x^2 = 72$ and $y - x = 4$, then find the value of $(x \times y)$?

(a) 33

(b) 44

(c) 55

(d) 77

(e) 66

Q42. The ratio of length to breadth of a rectangle is 7 : 3 and the perimeter of the rectangle is 40 cm. Find the area (in cm^2) of rectangle?

(a) 96

(b) 64

(c) 21

(d) 378

(e) 84

Q43. A man invested Rs.1460 in each scheme A and B. If scheme A offers simple interest at 10% p.a. for five years and scheme B offers simple interest at 10% p.a. for eight years, then find difference between interest (in Rs.) received from both schemes?

(a) 438

(b) 428

(c) 408

(d) 448

(e) 418

Q44. A man purchased two articles at same cost price and he sold one article at 18% loss and second at 30% profit. If total profit earned is Rs.210, then find the cost price (in Rs.) of each article?

- (a) 1500
- (b) 2000
- (c) 2250
- (d) 1750
- (e) 1250

Q45. A man purchase three different articles A, B & C and cost prices of these articles is Rs.52, Rs.78 and Rs.108 respectively. If number of each type of article purchase by man is equal and man spends total of Rs.1190, then find the number of each type of article purchased by the man?

- (a) 8
- (b) 4
- (c) 6
- (d) 7
- (e) 5

Q46. The ratio of present age of A to that of B is 5 : 4 respectively. Four years hence, age of A will be three years more than age of B six years hence. Find the present age of B?

- (a) 12 years
- (b) 20 years
- (c) 16 years
- (d) 24 years
- (e) 28 years

Q47. A vessel contains 120 liters mixture of milk and water in the ratio of 5 : 3. If 20 liters milk added in the vessel, then find the ratio of water to milk in resulting mixture?

- (a) 7 : 15
- (b) 11 : 19
- (c) 8 : 19
- (d) 9 : 19
- (e) 7 : 19

Q48. A car cover 160 km in five hours at the speed of x km/h and same distance cover by another car in 3 hour 20 minutes at the speed of y km/hr. Find the value of (x : y)?

- (a) 1 : 3
- (b) 2 : 3
- (c) 3 : 4
- (d) 1 : 4
- (e) 6 : 7

Q49. A boat takes five hours to cover certain distance in upstream and takes two hours to cover the same distance in downstream. If the speed of the stream is 3 km/hr, then find the distance?

- (a) 40 km
- (b) 30 km
- (c) 10 km
- (d) 20 km
- (e) 60 km

Q50. A is 40% more efficient than B. If B takes 6 days more than A to complete a work, then in how many days 'A' alone can complete the whole work?

- (a) 10 days
- (b) 15 days
- (c) 21 days
- (d) 24 days
- (e) 12 days

Direction (51 – 55): What will come in the place of question (?) mark in following number series –

Q51. 2, 4, 7, 12, 19, ?

- (a) 32
- (b) 30
- (c) 36
- (d) 34
- (e) 40

Q52. 67, 98, 129, 160, ?, 222

- (a) 193
- (b) 195
- (c) 191
- (d) 197
- (e) 199

Q53. 10, 18, 45, 109, ?, 450

- (a) 231
- (b) 232
- (c) 234
- (d) 236
- (e) 239

Q54. 12, 16, 25, 41, ?, 102

- (a) 66
- (b) 64
- (c) 62
- (d) 68
- (e) 72

TEST SERIES
BILINGUAL
VIDEO SOLUTIONS



IBPS PO 2022
PRELIMS + MAINS

90+ Total Tests | eBooks

Q55. 15, 20, 25, 30, ?, 40

- (a) 32
- (b) 35
- (c) 36
- (d) 45
- (e) 48

Direction (56 – 60): Table given below shows total three types (Sunflowers, lilies and Roses) of flowers used by an event management company in three different months. Read the data carefully and answer the questions.

Flowers	January	February	March
Sunflowers	68	112	96
Lilies	84	64	80
Roses	72	88	118

Q56. Total number of sunflowers used in January & March together are what percentage more than total number of roses used in January & February together?

- (a) 2.5%
- (b) 5%
- (c) 1.5%
- (d) 4%
- (e) 3%

Q57. Find the average number of all three types of flowers used by event management company in March?

- (a) 91
- (b) 90
- (c) 97
- (d) 93
- (e) 98

Q58. Find the ratio of total number of roses used in January to total number of lilies used in January?

- (a) 4 : 3
- (b) 6 : 5
- (c) 6 : 7
- (d) 9 : 4
- (e) 7 : 6

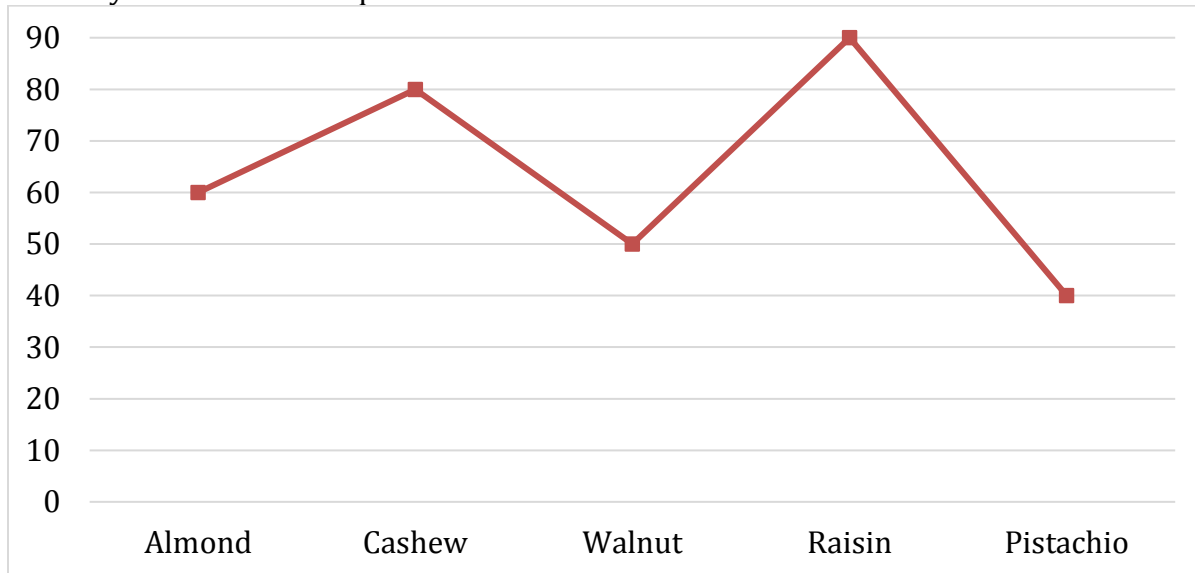
Q59. Total number of roses used in March is how much more than total number sunflowers used in January?

- (a) 90
- (b) 80
- (c) 50
- (d) 40
- (e) 60

Q60. Find the total number of sunflowers used in all the given three months?

- (a) 276
- (b) 274
- (c) 268
- (d) 272
- (e) 264

Direction (61 – 65): Line graph shows total quantity (in kg) of five different dry fruits sold by a shop. Read the data carefully and answer the questions.



Q61. If the ratio of dry to wet Walnut & Pistachio sold by shop is 3 : 2 and 5 : 3 respectively, then find difference (in kg.) between total dry Walnut & Pistachio sold by shop?

- (a) 6
- (b) 5
- (c) 8
- (d) 12
- (e) 4

Q62. Find the ratio of total Almond to total Raisin sold by the shop?

- (a) 3 : 5
- (b) 2 : 5
- (c) 1 : 3
- (d) 2 : 3
- (e) 1 : 2

Q63. If total Apricot sold by shop is 50% more than total Cashew sold by the shop and total dry Apricot sold by shop is 40% less than total wet Apricot sold by shop, then find total (in kg.) dry Apricot sold by the shop?

- (a) 45
- (b) 36
- (c) 40
- (d) 30
- (e) 60

Q64. Total Almonds & Pistachio sold by shop is what percent more than total Cashew sold by the shop?

- (a) 20%
- (b) 25%
- (c) 24%
- (d) 30%
- (e) 40%

Q65. Find the difference between total Walnut & Raisin sold by the shop and total Cashew & Pistachio sold by the shop?

- (a) 40 kg
- (b) 5 kg
- (c) 30 kg
- (d) 20 kg
- (e) 10 kg

Direction (66 – 80): What value should come in place of (?) in the following questions?

Q66. $\frac{510}{?} = \sqrt{324} + \sqrt{256}$

- (a) 20
- (b) 5
- (c) 10
- (d) 15
- (e) 25

Q67. $3 \times ?^2 = (5)^2 + (7)^2 + (17)^2$

- (a) 12
- (b) 13
- (c) 10
- (d) 11
- (e) 15

Q68. $?^2 = 40\% \text{ of } 420 + 44\% \text{ of } 200$

- (a) 24
- (b) 12
- 11111(c) 8
- (d) 16
- (e) 416

Q69. $2\frac{1}{3} \text{ of } 4\frac{2}{7} \text{ of } 3\frac{1}{3} \text{ of } 81 = ?$

- (a) 2900
- (b) 2500
- (c) 2700
- (d) 2300
- (e) 2400

BILINGUAL

Video Solutions

BANK PRIME

TEST PACK

IBPS RRB, SBI, IBPS PO | Clerk & Others

1200+ TOTAL TESTS

Q70. $\sqrt{256 \times 49} + (16)^2 - \sqrt[3]{343} = (?)^2$

- (a) 21
- (b) 18
- (c) 14
- (d) 22
- (e) 19

Q71. $\sqrt{256} \times \sqrt{169} + 3600 \div 12 = 800 - ?$

- (a) 312
- (b) 280
- (c) 292
- (d) 324
- (e) 296

Q72. $37.5 \times 14 + 800 - (26)^2 + 136 = ?$

- (a) 785
- (b) 800
- (c) 810
- (d) 825
- (e) 765

Q73. $\sqrt{12.25} \times 18 - (6)^2 - \sqrt{4} = (?)^2$

- (a) 7
- (b) 6
- (c) 5
- (d) 4
- (e) 3

Q74. $(1350 + 1625) \div (625 + 565) = ?$

- (a) 1.5
- (b) 2.5
- (c) 1
- (d) 2.25
- (e) 2.75

Q75. $\sqrt{625} \div \sqrt[3]{64} \times 6 = ?\% \text{ of } 150$

- (a) 5
- (b) 25
- (c) 15
- (d) 20
- (e) 22.5

Q76. $15 \times 26 + 310 - (15)^2 = 20\%$ of ?

- (a) 2375
- (b) 1825
- (c) 2525
- (d) 2150
- (e) 1950

Q77. $3^2 \times \sqrt{625} + 35^2 + 150 = (?)^2$

- (a) 50
- (b) 45
- (c) 35
- (d) 30
- (e) 40

Q78. $6\frac{3}{4} + 3\frac{6}{5} - 7\frac{7}{8} = ? + 1\frac{7}{10}$

- (a) $1\frac{3}{8}$
- (b) $\frac{9}{10}$
- (c) $\frac{3}{5}$
- (d) $\frac{5}{8}$
- (e) $\frac{4}{7}$

Q79. $\sqrt{80\% \text{ of } (? + 60)} = \frac{250}{3}\%$ of 12

- (a) 45
- (b) 35
- (c) 65
- (d) 55
- (e) 25

Q80. $250\% \text{ of } 300 - 55 \times 40 + 2700 = ?$

- (a) 1050
- (b) 1250
- (c) 1150
- (d) 1350
- (e) 1450

Bilingual

Special Offer

**IBPS 2022
RRB CLERK
PRELIMS**

with Video Solutions

55+ TOTAL TESTS

BOOKS

50+ BANK PO CLERK 2016-2021 PREVIOUS YEARS' Memory Based Papers Edition 3.0 500+ Questions 6500+ Detailed Solutions of English & Reasoning	50+ बैंक पीओ/ क्लर्क 2016-2021 पिछले वर्षों की याददाश्त आधारित प्रश्नपत्रिका Edition 3.0 300 प्रश्न 6000+ विस्तृत समाधान	20+ SBI CLERK PRELIMS MOCK PAPERS Based on Latest Pattern 17 Prelims Mock Papers 2100 Questions with 100% Solutions	A Complete Book of PUZZLE & SEATING ARRANGEMENT Useful for Banking & Insurance Examinations for IBPS, SBI, LIC, LIC & Others 3200+ Questions	20+ IBPS CLERK PRELIMS MOCK PAPERS Based on Latest Pattern 20 IBPS Clerk Prelims Mock Papers 2100 Questions with 100% Solutions	"THE CRACKER" BANK MAINS EXAMS Bank mains for IBPS SBI RRB PO-CLERK 2000+ Questions 3500+ Detailed Solutions	COMPREHENSIVE GUIDE FOR INTELLIGENCE BUREAU ACIO GRADE-II 3500+ Questions
A COMPLETE BOOK OF DATA INTERPRETATION & ANALYSIS Useful for Banking & Insurance Examinations for IBPS, SBI, LIC, LIC & Others 2000+ Questions	25+ IBPS RRB PO & CLERK PRELIMS MOCK PAPERS Based on Latest Pattern English Medium 2240 Questions with 100% Solutions	Ace QUANT A Complete Guide for Quantitative Aptitude 1000+ Questions with 100% Solutions	ऐस क्वान्ट एक पूर्ण गाइड क्वांटिटेटिव अप्टीट्यूड के लिए 1000+ प्रश्न 100% समाधान के साथ	Ace REASONING A Complete Guide for Reasoning Aptitude 1000+ Questions with 100% Solutions	ऐस रीजनिंग एक पूर्ण गाइड रीजनिंग के लिए 1000+ प्रश्न 100% समाधान के साथ	Ace BANKING & STATIC AWARENESS 1000+ Questions with 100% Solutions
Ace IT OFFICER Professional Knowledge 1000+ Questions with 100% Solutions	COMPUTER APTITUDE For Banking & Insurance Examinations 1000+ Questions with 100% Solutions	BANK EXAMS INTERVIEWS A Guide to Crack 1000+ Questions with 100% Solutions	100+ SSC CGL TIER-I / PRELIMS Previous Years' Papers & Mock Tests Practice Book English Medium 1000+ Questions with 100% Solutions	A Comprehensive Guide for RRC GROUP 'D' 4000+ Questions with 100% Solutions	A COMPLETE BOOK OF LOGICAL REASONING Useful for IBPS SBI LIC Insurance & Other Exams 550+ Questions	"THE CRACKER" PRACTICE BOOK FOR GEOMETRY Useful for SSC CGL CPO CHSL & Other Exams 800+ Questions 3500+ Detailed Solutions
उत्तर प्रदेश पुलिस UP Police Recruitment 2020 (M & ASI) 3500+ Questions 100% Solutions	A Comprehensive Guide for DELHI POLICE CONSTABLE Useful for UP Police, Bihar Police, Forest Guard & Other Exams 3000+ Questions 100% Solutions	50+ SSC CGL TIER - I MOCK PAPERS PRACTICE BOOK Useful for SSC CGL, CHSL and CPO 500 Questions with 100% Solutions	20+ SSC CGL TIER-I PREVIOUS YEAR MOCK PAPERS PRACTICE BOOK Useful for SSC CGL, CHSL & CPO 200 Questions with 100% Solutions	"THE CRACKER" PRACTICE BOOK FOR ALGEBRA & NUMBER SYSTEM 1300+ Questions	"THE CRACKER" PRACTICE BOOK FOR MENSURATION Useful for SSC CGL CPO CHSL & Other Exams 850+ Questions	Ace SSC ARITHMETIC 1000+ Questions with 100% Solutions
ऐस एसएससी अंक गणित एक पूर्ण गाइड अंकगणित के लिए	Ace SSC ENGLISH LANGUAGE & COMPREHENSION BOOK 1000+ Questions with 100% Solutions	Ace SSC ADVANCED MATHS 1000+ Questions with 100% Solutions	ऐस एसएससी एवरेज मैथ एक पूर्ण गाइड एवरेज मैथ के लिए	Ace SSC GENERAL AWARENESS History Geography Polity Current Affairs Olympiad Banking 1000+ Questions with 100% Solutions	ऐस एसएससी सामान्य जागरूकता इतिहास भूगोल राजनीति वर्तमान घटनाएँ ओलंपियाड बैंकिंग	Ace SSC GENERAL INTELLIGENCE & REASONING 1000+ Questions with 100% Solutions

Visit: adda247.com
 For any information, mail us at support.publication@adda247.com