

All India Maha Mock: SBI PO Pre 30-Oct-2021

Directions (1-5): In the following questions, a sentence is given with a blank in it. Following each sentence some words are provided. Choose the word(s) that can fill the given blank to make a contextually meaningful and grammatically correct sentence.

Q1. India continues to be in the local transmission phase _____ the country registering a spike from 100 to 1,000 cases in 12 days.

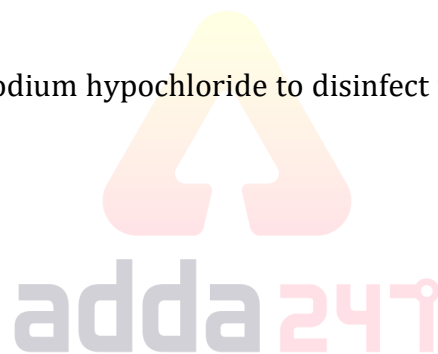
- (i) in spite
- (ii) respite
- (iii) despite
- (a) Only (i)
- (b) Only (iii)
- (c) Both (i) and (iii)
- (d) Both (i) and (ii)
- (e) All of these.

Q2. Drones were used to _____ sodium hypochloride to disinfect parts of North Delhi in a pilot project by the area municipal corporation.

- (i) spray
- (ii) assess
- (iii) mitigate
- (a) Only (i)
- (b) Only (iii)
- (c) Both (ii) and (iii)
- (d) Both (i) and (ii)
- (e) All of these.

Q3. To help guide the homeless to the camps, the Delhi government has released a customised Google Maps link which shows the _____ of the facilities.

- (i) monitor
- (ii) locations
- (iii) position
- (a) Only (i)
- (b) Only (iii)
- (c) Both (ii) and (iii)
- (d) Both (i) and (ii)
- (e) All of these.



Q4. The migrant _____ who have moved out of their work spots must be quarantined in the nearest shelter after proper screening.

- (i) workers
- (ii) policy
- (iii) status
- (a) Only (i)
- (b) Only (iii)
- (c) Both (ii) and (iii)
- (d) Both (i) and (ii)
- (e) All of these.

Q5. Education Minister announced that all students from Nursery to Class VIII will be _____ to the next class irrespective of whether they have been assessed or not.

- (i) battled
- (ii) assure
- (iii) promoted
- (a) Only (i)
- (b) Only (iii)
- (c) Both (i) and (iii)
- (d) Both (i) and (ii)
- (e) All of these.

Directions (6-13): Read the passage given below and answer the questions based on the information provided in the passage.

The social benefits of being able to speak two or more tongues are obvious—you get to know other cultures and thereby expand your social base. But does it also somehow make the mind nimbler, if not more intelligent.

For the better part of the last century, most scientists believed that while it was an advantage for a child to speak two languages, it came at a heavy price. To quote one Danish linguist from that period, “First of all the child hardly learns either of the two languages as perfectly as he would have done had he limited himself to one... Secondly, the brain effort required to master the two languages instead of one certainly diminishes the child’s power of learning other things.”

Since the 1960s, this view has been gradually eclipsed as many studies found that kids speaking more than one language enjoy what researchers call the bilingual advantage. Apparently, it boosts the brain’s executive function—an omnibus word used to describe a **medley** of mental faculties such as problem-solving ability, memory, communication, sustained focus, and multi-tasking. Significantly, studies also show that the bilingual brain is more resilient to dementia and Alzheimer’s.

Canadian psychologist Ellen Bialystok’s 2004 study is major contribution in this regard. Bialystok put two sets of people—Tamil-English bilinguals from India and English monolinguals from Canada—through a test called the Simon task. The idea was to press a key (say right key for red and left for green) as the colour objects flash on a screen. Expectedly, the reaction time is faster if the position of the keys and objects match (red object on right half of the screen) than if they don’t (red object on left).

Bialystok found the bilingual Indians were quicker and more accurate than the monolingual Canadians when the keys and colours were mismatched. The results of this test made him arrive at the conclusion that the constant switching between two languages alters the brain's architecture in ways that somehow make the executive function more efficient. Nevertheless, **sceptics** remain. Without discounting the results of studies that have shown the positive effects of bilingualism, psychologists have countered the bilingual advantage thesis saying it is not as universal and common as claimed.

Advantageous or not, it is a fact that more than half the world is bilingual today—thanks to the globalization of English, albeit sadly, at the expense of many vulnerable languages.

Q6. What can be considered as the benefits of being multilingual?

- (a) Develops new grey matter in the brain
- (b) Knowledge of other cultures
- (c) Increases speed and accuracy of brain
- (d) (a) and (b)
- (e) (b) and (c)

Q7. What was myth associated with children being bilingual in the earlier times?

- (a) Improper knowledge of either language
- (b) Intermixing of both languages while writing
- (c) Effort to grasp two languages leads to an overall deterioration to learn other things
- (d) (a) and (c)
- (e) None of the above

Q8. What can be said about a child who is bilingual with respect to memory problems?

- (a) They are more immune to cognition related problems in their old age
- (b) They are more prone to memory related diseases in the later stage of their lives
- (c) They showcase a higher tendency towards academia in their late 60s
- (d) (a) and (c)
- (e) All of the above

Q9. Which of the statements can be considered as true with respect to the passage given?

- (a) Bilingual people have a higher emotional quotient compared to monolinguals
- (b) Learning more than three languages can impair the learning capacity of a child
- (c) Bialystok experiment involved individuals from Canada and native Punjabi speakers
- (d) Dementia and Alzheimer's are diseases affecting the stomach lining.
- (e) None of the above

Q10. What was the conclusion of Bialystok's experiment?

- (a) The impulses seen on an EEG of a bilingual are in a more excited state than one who is not
- (b) Bilingual people have a more efficient brain structure with regards to executive functions
- (c) It highlighted the inborn prejudices in a child's mind
- (d) Capability of a human to learn a new language
- (e) None of the above

Q11. Which of the following word is opposite to **SCEPTICS** as mentioned in the passage given?

- (a) affable
- (b) infidel
- (c) doubter
- (d) Believer
- (e) None of the above

Q12. Which of the following word is similar to **MEDLEY** as mentioned in the passage given?

- (a) combination
- (b) rebate
- (c) concrete
- (d) calibrate
- (e) None of the above

Q13. What has been a negative impact of globalisation of English language?

- (a) Lesser communication between illiterate and literate people
- (b) Many fewer known languages are becoming more and more vulnerable
- (c) Increasing social stratification
- (d) (a) and (c)
- (e) None of the above

Directions (14-15): In the following questions, a sentence is given with a blank in it. Following each sentence four options are provided. Choose the option that can fill the given to make a meaningful sentence.

Q14. The open space outside the Howrah railway station is _____ on Friday morning.

- (a) at the drop of a hat
- (b) barking up the wrong tree
- (c) spic and span
- (d) method to my madness
- (e) none of these

Q15. Director Joel Thompson has called for NRL stars to _____ and accept their pay cuts for the greater good of the game.

- (a) stop crying over spilt milk
- (b) hit the sack
- (c) cost an arm and a leg
- (d) have egg on their face
- (e) none of these

Directions (16-20): In the following passage, some of the words have been highlighted, each of which is indicated by a number. Find the suitable word from the options given against each number and replace them with appropriate words to make the paragraph meaningfully complete.

Q16. Social distancing is a term applied to certain actions that are taken by Public Health officials to stop or slow down the spread of a highly **protective(16)** disease. The Health Officer has the legal authority to carry out social distancing measures. Since these measures will have considerable impact on our community, any action to start social distancing measures would be **originated(17)** with local agencies such as cities, police departments and schools, as well as with state and federal partners.

Today, social distancing measures are most often thought about as a way to slow the **fall(18)** of pandemic influenza. Health experts have looked at past pandemics and found that during the 1957-58 pandemic, the spread of the disease followed public **sporting (19)** such as conferences and festivals. And during this pandemic, the highest attack rates were seen in school children, due to their close contact in a **distance (20)** setting. Health experts believe that avoiding crowds of people will be important in slowing the spread of pandemic influenza. Other public health actions that are used to limit the spread of an infectious disease include isolation and quarantine.

- (a) reflective
- (b) porous
- (c) contagious
- (d) suspicious
- (e) None of these.

Q17. Social distancing is a term applied to certain actions that are taken by Public Health officials to stop or slow down the spread of a highly **protective(16)** disease. The Health Officer has the legal authority to carry out social distancing measures. Since these measures will have considerable impact on our community, any action to start social distancing measures would be **originated(17)** with local agencies such as cities, police departments and schools, as well as with state and federal partners.

Today, social distancing measures are most often thought about as a way to slow the **fall(18)** of pandemic influenza. Health experts have looked at past pandemics and found that during the 1957-58 pandemic, the spread of the disease followed public **sporting (19)** such as conferences and festivals. And during this pandemic, the highest attack rates were seen in school children, due to their close contact in a **distance (20)** setting. Health experts believe that avoiding crowds of people will be important in slowing the spread of pandemic influenza. Other public health actions that are used to limit the spread of an infectious disease include isolation and quarantine.

- (a) assign
- (b) subjected
- (c) sum
- (d) coordinated
- (e) None of these.

NRA-CET Ready

BANK MAHA PACK

Live Class, Video Course,
Test Series, eBooks

Bilingual (with eBooks)
6+6 Months Validity

Q18. Social distancing is a term applied to certain actions that are taken by Public Health officials to stop or slow down the spread of a highly **protective(16)** disease. The Health Officer has the legal authority to carry out social distancing measures. Since these measures will have considerable impact on our community, any action to start social distancing measures would be **originated(17)** with local agencies such as cities, police departments and schools, as well as with state and federal partners.

Today, social distancing measures are most often thought about as a way to slow the **fall(18)** of pandemic influenza. Health experts have looked at past pandemics and found that during the 1957-58 pandemic, the spread of the disease followed public **sporting (19)** such as conferences and festivals. And during this pandemic, the highest attack rates were seen in school children, due to their close contact in a **distance (20)** setting. Health experts believe that avoiding crowds of people will be important in slowing the spread of pandemic influenza. Other public health actions that are used to limit the spread of an infectious disease include isolation and quarantine.

- (a) spread
- (b) fallen
- (c) origin
- (d) mitigation
- (e) None of these.

Q19. Social distancing is a term applied to certain actions that are taken by Public Health officials to stop or slow down the spread of a highly **protective(16)** disease. The Health Officer has the legal authority to carry out social distancing measures. Since these measures will have considerable impact on our community, any action to start social distancing measures would be **originated(17)** with local agencies such as cities, police departments and schools, as well as with state and federal partners.

Today, social distancing measures are most often thought about as a way to slow the **fall(18)** of pandemic influenza. Health experts have looked at past pandemics and found that during the 1957-58 pandemic, the spread of the disease followed public **sporting (19)** such as conferences and festivals. And during this pandemic, the highest attack rates were seen in school children, due to their close contact in a **distance (20)** setting. Health experts believe that avoiding crowds of people will be important in slowing the spread of pandemic influenza. Other public health actions that are used to limit the spread of an infectious disease include isolation and quarantine.

- (a) growth
- (b) demand
- (c) gatherings
- (d) placid
- (e) None of these.

Q20. Social distancing is a term applied to certain actions that are taken by Public Health officials to stop or slow down the spread of a highly **protective(16)** disease. The Health Officer has the legal authority to carry out social distancing measures. Since these measures will have considerable impact on our community, any action to start social distancing measures would be **originated(17)** with local agencies such as cities, police departments and schools, as well as with state and federal partners.

Today, social distancing measures are most often thought about as a way to slow the **fall(18)** of pandemic influenza. Health experts have looked at past pandemics and found that during the 1957-58 pandemic, the spread of the disease followed public **sporting (19)** such as conferences and festivals. And during this pandemic, the highest attack rates were seen in school children, due to their close contact in a **distance (20)** setting. Health experts believe that avoiding crowds of people will be important in slowing the spread of pandemic influenza. Other public health actions that are used to limit the spread of an infectious disease include isolation and quarantine.

- (a) restricted
- (b) crowded
- (c) mandatory
- (d) controlled
- (e) None of these.

Directions (21-25): In each of the questions given below four words are given in bold. These four words may or may not be in their correct position. The sentence is then followed by options with the correct combination of words that should replace each other in order to make the sentence grammatically and contextually correct. Find the correct combination of the words that replace each other. If the sentence is correct as it is then select option (E) as your choice.

Q21. Germany is hoping to **stuck (1)** out the first batch of an **estimated(2)** 3,000 to 5,000 tourists who have been **fly (3)** in India since the government **banned(4)** commercial flights.

- (a) 1-4
- (b) 2-3
- (c) 2-4
- (d) 1-3
- (e) No replacement required.


adda247

Q22. The Ministry of Home Affairs **issued(1)** a **contain (2)** of guidelines to be **followed(3)** by the States to **slew (4)** COVID-19.

- (a) 1-4
- (b) 2-3
- (c) 2-4
- (d) 1-3
- (e) No replacement required.

Q23. A **neighboring (1)** of 75 Indian students were **stranded(2)** at the Benapole border **crossing(3)** of Bangladesh as India shut all land crossings with **group (4)** countries.

- (a) 1-4
- (b) 2-3
- (c) 2-4
- (d) 1-3
- (e) No replacement required.

Q24. The Enforcement Directorate has directed its officials to **crowding (1)** office on a **rotation(2)** basis to avoid **attend (3)** in the wake of the COVID-19 **outbreak(4)**.

- (a) 1-4
- (b) 2-3
- (c) 2-4
- (d) 1-3
- (e) No replacement required.

Q25. Elections(1) to 18 Rajya Sabha seats that were **deferred (2)** to take place on March 26 have been **scheduled (3)** due to the COVID-19 **pandemic(4)**.

- (a) 1-4
- (b) 2-3
- (c) 2-4
- (d) 1-3
- (e) No replacement required.

Directions (26-30): Rearrange the following sentences to form a contextually meaningful paragraph and answer the following questions.

(A) Further, On March 26, the tally for Bhilwara stood at 18 positive cases, one of whom has died.

(B) A string of cases positive to the novel coronavirus have been reported in Rajasthan's Bhilwara over the last week.

(C) So far, the state administration has conducted door-to-door surveys in the town and teams have screened 106,856 households and 533,786 people.

(D) This is Rajasthan's first death due to COVID-19 and the person who died was also suffering from chronic kidney disease.

(E) The town and district registered their first case on March 19, 2020, when a doctor in the town's hospital tested positive for the virus.

Q26. Which of the following will be third sentence after rearrangement?

- (a) D
- (b) A
- (c) B
- (d) E
- (e) C

Q27. Which of the following will be first sentence after rearrangement?

- (a) D
- (b) A
- (c) B
- (d) E
- (e) C

Q28. Which of the following will be last sentence after rearrangement?

- (a) D
- (b) A
- (c) B
- (d) E
- (e) C

Q29. Which of the following will be fourth sentence after rearrangement?

- (a) D
- (b) A
- (c) B
- (d) E
- (e) C

Q30. Which of the following will be second sentence after rearrangement?

- (a) D
- (b) A
- (c) B
- (d) E
- (e) C

Directions (31-35): Given below table shows number of male and female employee in five different bank and percentage of 'employees who got promoted out of total employee in each of these banks. Read the data carefully and answer the questions.

Banks	Male employee	Female employee	% of employees who got promoted
SBI	800	700	40%
UBI	520	200	80%
PNB	680	840	60%
UCO	400	600	80%
BOB	480	720	50%

Note - Total employees in any bank = Total (male + female) employees in that bank.

Q31. If female employee promoted in SBI are 50% more than promoted male employee in SBI and male employees who are promoted in UBI are 100% more than male employees who are promoted in SBI, then find number of female employees who did not get promotion in SBI & UBI together?

- (a) 424
- (b) 484
- (c) 444
- (d) 422
- (e) 448



Q32. Find the difference between total promoted employee from PNB & BOB together and average number of male employees from SBI & BOB?

- (a) 872
- (b) 672
- (c) 832
- (d) 842
- (e) 862

Q33. Total employee promoted from UCO is what percent more than total employee promoted from SBI?

- (a) $66\frac{2}{3}\%$
- (b) $30\frac{1}{3}\%$
- (c) $36\frac{1}{3}\%$
- (d) $33\frac{1}{3}\%$
- (e) None of these

Q34. If ratio of male to female employee promoted from PNB is 9 : 7, then find difference between male and female employee promoted from PNB?

- (a) 134
- (b) 124
- (c) 114
- (d) 104
- (e) 112

Q35. If total female employee promoted from UCO are $66\frac{2}{3}\%$ more than total male employee promoted from same bank, then find total employee promoted from BOB is what percent of total female employee promoted from UCO?

- (a) 100%
- (b) 120%
- (c) 80%
- (d) 125%
- (e) 150%

Q36. A & B starts a business with the capital of Rs. 2000 & Rs. 2400 respectively. If A left the business after _____ months and profit of B is Rs. 1600 Out of the total profit of Rs. 2600 at the end of the year, then what will come in the place of blank?

- (a) 6
- (b) 8
- (c) 5
- (d) 9
- (e) 10

Q37. A total ____ liters mixture of milk and water is in the ratio 5 : 3 respectively . If 80 liters of mixture is taken out and 8 liters of pure water is added to the remaining mixture, then percentage of water in the mixture becomes 40%. What will come in the place of blank?

- (a) 296 liters
- (b) 288 liters
- (c) 300 liters
- (d) 272 liters
- (e) 240 liters

Q38. Speed of train B is 25% more than train A and train A & B crosses a same pole in 12 sec and 8 sec respectively. If train A crosses a 480 meters long platform in 36 sec and train B crosses same platform in ____ seconds, then what will come in the place of blank?

- (a) 24
- (b) 18.2
- (c) 24.2
- (d) 13.6
- (e) 27.2

Q39. Tap P open for first four hours in a tank and remaining tank filled by tap Q in 18 hours. If tap P opened for first six hours and then the remaining tank filled by tap Q in 12 hours, find in how many hours tap P alone can fill the tank?

- (a) 10 hours
- (b) 12 hours
- (c) 16 hours
- (d) 20 hours
- (e) 24 hours

Q40. There is some profit when a jean is sold for Rs. 1680 and when the same jean is sold for Rs. 960, there is some loss. If profit earned on jeans is 100% more than loss, then find the selling price when same jeans sold at 50% profit.

- (a) Rs. 2800
- (b) Rs. 1600
- (c) Rs. 1800
- (d) Rs. 2000
- (e) Rs. 2400

Q41. Veer invested Rs 4800 at the rate of X% p.a. on C.I. and Rs. 2400 at the rate of 2X% p.a. on compound interest. If after two years Veer gets Rs. 48 more interest on the amount invested at 2X% than amount invested at X%, then find the value of 1.5X?

- (a) 10
- (b) 15
- (c) 24
- (d) 20
- (e) 12

Q42. Length of rectangle is 200% more than side of square. If breadth of rectangle is 24 cm and perimeter of rectangle is 72 cm more than perimeter of square, then find the sum of area of rectangle and square?

- (a) 996 cm²
- (b) 1008 cm²
- (c) 1018 cm²
- (d) 918 cm²
- (e) 1088 cm²

Q43. Sum of present ages of Prashant and Shivam is 47 years. Shivam's age 6 years hence is 4 years more than Prashant's age 5 years ago. Find Prashant's present age is what percent more than Shivam's present age?

- (a) 30%
- (b) 35%
- (c) 40%
- (d) 45%
- (e) 25%

Q44. Anurag can complete a piece of work in 280 days and Rohit is $33\frac{1}{3}\%$ more efficient than Anurag. Anurag and Veer together can complete the same piece of work in 180 days. If all three-start working together, then find in how many days the work will be completed?

- (a) 116 days
- (b) 138 days
- (c) 134 days
- (d) 102 days
- (e) None of the above.



Q45. Average of four numbers is 64. If 3 is added to first number, multiplied to second, subtracted from the third and divided to last one then all the values are same. Find the difference between 2nd highest and the smallest number?

- (a) 45
- (b) 35
- (c) 42
- (d) 39
- (e) 32

Directions (46-50): What will come in the place of question (?) mark in following number series.

Q46. 420, 2095, 8376, 25125, ?, 50247

- (a) 50236
- (b) 50246
- (c) 50240
- (d) 50248
- (e) 50244

Q47. 130, 755, 1155, 1380, 1480, ?

- (a) 1515
- (b) 1525
- (c) 1505
- (d) 1535
- (e) 1530

Q48. 16, 10, 12, 20, ?, 107

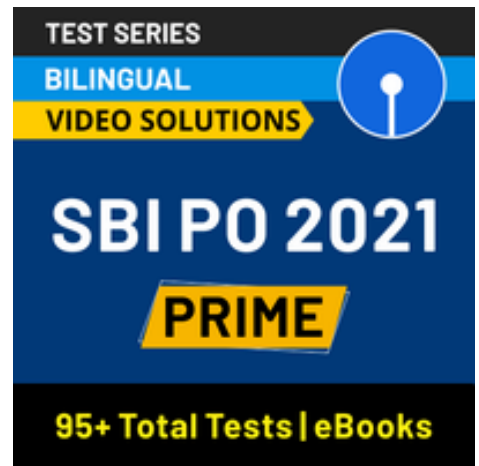
- (a) 42
- (b) 40
- (c) 38
- (d) 44
- (e) 48

Q49. 25, 27, ?, 39, 55, 87

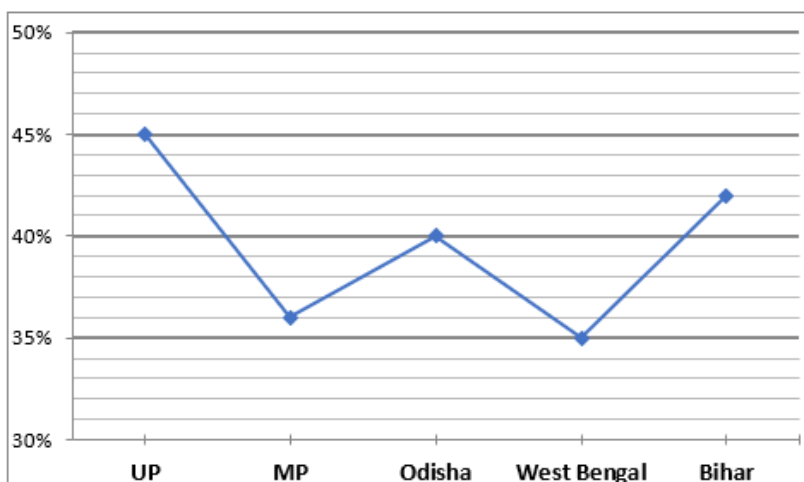
- (a) 32
- (b) 36
- (c) 31
- (d) 33
- (e) 29

Q50. 26, ?, 226, 274, 298, 306

- (a) 148
- (b) 146
- (c) 156
- (d) 142
- (e) 144



Directions (51-55): Given below line graph shows the male employees percentage out of total employees selected by Adda247 from five different states.



Note: - Total employees selected from each state = Male + Female

Q51. If total employees selected from each state from UP, Odisha and West Bengal are same, then find the ratio of female selected from these states respectively?

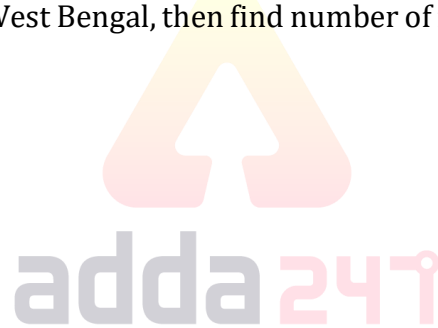
- (a) 10 : 12 : 13
- (b) 11 : 22 : 16
- (c) 11 : 12 : 13
- (d) 11 : 13 : 12
- (e) None of these

Q52. If total female employees selected from UP are $37\frac{1}{2}\%$ more than female employees selected from MP, then male employees selected from UP is what percent more than male employees selected from MP?

- (a) 50%
- (b) 80%
- (c) 75%
- (d) 100%
- (e) 125%

Q53. If total number of employees selected from Bihar is 50 and male employees selected from Bihar is 50% more than male employees of West Bengal, then find number of female employees selected from West Bengal?

- (a) 24
- (b) 26
- (c) 27
- (d) 28
- (e) 30



Q54. If females selected from MP and West Bengal are 16 and 26 respectively then find the difference between number of males selected from MP and West Bengal.

- (a) 6
- (b) 3
- (c) 7
- (d) 4
- (e) 5

Q55. If difference between total male employees selected from Odisha and West Bengal is zero, then find ratio of female employees selected from West Bengal to Odisha.

- (a) 26 : 21
- (b) 24 : 19
- (c) 14 : 9
- (d) 33 : 28
- (e) 30 : 23

Directions (56-60): Study the following information carefully and answer the questions given below.

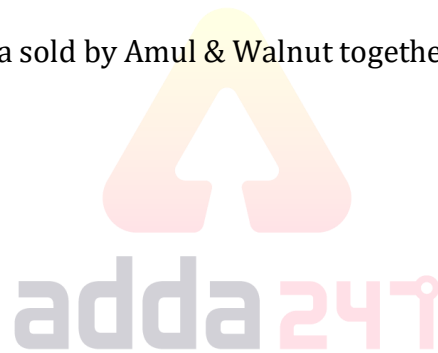
Three ice cream parlors Amul, Sudha and Walnut sold two flavors of ice cream, i.e., Vanilla and Strawberry. The ratio of total number of Vanilla to Strawberry sold by Amul & Sudha is 8 : 9 and 5 : 7 respectively. The total number of Vanilla to Strawberry sold by Walnut is 136 and respective ratio between number of Vanilla to Strawberry sold by Walnut is 9: 8. Total number of ice creams sold by all three parlors is 426 and total number of Vanilla ice creams sold by Amul is 60% more than that of sold by Sudha.

Q56. If cost of each Vanilla and each Strawberry sold by Sudha is Rs 300 and Rs 250 respectively, then find the total amount obtained by Sudha parlor (in Rs).

- (a) 34000
- (b) 34500
- (c) 33500
- (d) 32500
- (e) 46000

Q57. What is the ratio of total Vanilla sold by Amul & Walnut together to total Strawberry sold by Sudha & Walnut together?

- (a) 23 : 25
- (b) 27 : 25
- (c) 76 : 67
- (d) 29 : 27
- (e) 23 : 30



Q58. What is the average number of Strawberry sold by Amul and Sudha?

- (a) 61
- (b) 68
- (c) 62
- (d) 80
- (e) 65

Q59. Total Vanilla sold by Amul and Walnut are what percent (approximate) of total Strawberry sold by Sudha & Walnut together?

- (a) 113%
- (b) 117%
- (c) 109%
- (d) 121%
- (e) 119%

Q60. If Vanilla sold by Sudha is increased by 20% and Vanilla sold by Amul is increased by 80%, then find the sum of vanilla sold by Sudha and Vanilla sold by Amul after increment.

- (a) 178
- (b) 186
- (c) 198
- (d) 204
- (e) 182

Directions (61-65): Solve the given quadratic equations and mark the correct option based on your answer.

Q61. I. $x^2 + x - 12 = 0$
II. $y^2 + 2y - 15 = 0$

- (a) $x > y$
- (b) $x \geq y$
- (c) $x < y$
- (d) $x \leq y$
- (e) $x = y$ or no relation can be established between x and y .

Q62. I. $6x^2 - 5x + 1 = 0$
II. $3y^2 + 8y = 3$

- (a) $x > y$
- (b) $x \geq y$
- (c) $x < y$
- (d) $x \leq y$
- (e) $x = y$ or no relation can be established between x and y .

Q63. I. $12x^2 - 7x + 1 = 0$
II. $6y^2 - 5y + 1 = 0$

- (a) $x > y$
- (b) $x \geq y$
- (c) $x < y$
- (d) $x \leq y$
- (e) $x = y$ or no relation can be established between x and y .

Q64. I. $x^2 + 7x + 10 = 0$
II. $2y^2 + 5y + 2 = 0$

- (a) $x > y$
- (b) $x \geq y$
- (c) $x < y$
- (d) $x \leq y$
- (e) $x = y$ or no relation can be established between x and y .

Q65. I. $x^2 - 2x = 15$
II. $y^2 + 5y + 4 = 0$

- (a) $x > y$
- (b) $x \geq y$
- (c) $x < y$
- (d) $x \leq y$
- (e) $x = y$ or no relation can be established between x and y .

Directions (66-70): Study the following information carefully and answer the questions given below:

Ten persons sit in two parallel rows containing five persons in each row in such a way that there is an equal distance between adjacent persons. Persons who sit in row 1 face in the north direction and persons who sit in row 2 face in south direction. Each person in row 1 faces each person in row 2.

Q who sits at one of the extreme ends sits third to the right of R. Only two persons sit between C and the one who faces R. Only two persons sit between P and B. D faces the one who sits immediate left of R. T sits second to the left of D. A who sits immediate left of P faces the one who sits immediate left of S. E is one of the persons who sit in row 1.

Q66. How many persons sit between P and the one who faces S?

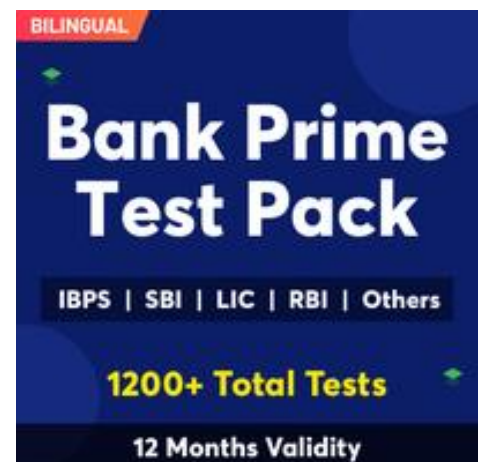
- (a) None
- (b) One
- (c) Two
- (d) None of these
- (e) Three

Q67. Four of the following five are alike in a certain way and hence form a group which of the following does not belong to the group?

- (a) C-Q
- (b) P-S
- (c) T-A
- (d) S-R
- (e) D-B

Q68. Which of the following is not true regarding Q?

- I. Q sits second to the left of P
 - II. C faces Q
 - III. Only one person sits between Q and B
- (a) Both I and II
 - (b) Only II
 - (c) Both I and III
 - (d) Only I
 - (e) Only III



Q69. Who among the following faces the one who sits second to the right of R?

- (a) E
- (b) A
- (c) T
- (d) S
- (e) None of these

Q70. Which of the following pair of persons sit in the same row?

- (a) Q, C
- (b) P, E
- (c) A, T
- (d) S, E
- (e) D, A

Directions (71-75): Study the information carefully and answer the questions given below.

U O 7 H N R 2 K F 5 V I Q A 4 8 L J Y 1 0 Z B C X 9 W S M S 3 P 6 G E D

Q71. Which of the following element will be seventh to the left of eighth element from the right end?

- (a) 0
- (b) B
- (c) Z
- (d) C
- (e) None of these

Q72. How many digits are there in the series which are immediately followed by a consonant?

- (a) One
- (b) Four
- (c) Three
- (d) Two
- (e) More than four

Q73. How many vowels are there in the series which are immediately followed by a digit?

- (a) Three
- (b) None
- (c) Four
- (d) One
- (e) None of these

Q74. If all the digits are removed from the series, then which of the following will be eighth to the right of eighth from the left end?

- (a) B
- (b) C
- (c) X
- (d) Z
- (e) None of these

Q75. How many letters are there in the given series which are immediately followed and immediately preceded by a perfect square digit?

- (a) One
- (b) None
- (c) More than Three
- (d) Two
- (e) Three

Directions (76-80): Study the information carefully and answer the questions given below.

In a certain code language,

“Pandemic road Purpose” is coded as - “N18 L26 L8”

“Vision system court” is coded as - “R12 G22 F9”

“Growth rethink progress” is coded as - “D7 R13 V8”

Q76. What is the code of “Finance” in the given code language?

- (a) N26
- (b) X13
- (c) M24
- (d) R 24
- (e) None of these

Q77. Which of the following word may be coded as “R13” in a certain code language?

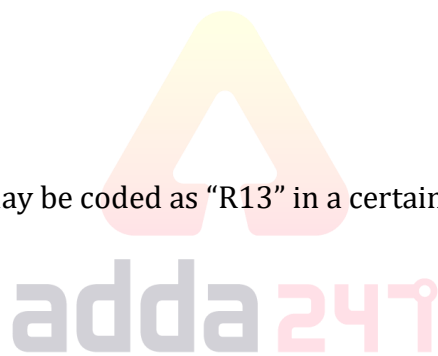
- (a) Capitalist
- (b) Between
- (c) Global
- (d) Removing
- (e) None of these

Q78. What is the code of “Economy Term” in the given code language?

- (a) N9 L15
- (b) L14 V9
- (c) R9 L14
- (d) V9 L13
- (e) None of these

Q79. Which of the following words may be coded as “L20” in a certain code language?

- (a) Application
- (b) Terminology
- (c) Capsicum
- (d) Hundred
- (e) Even



Q80. What is the code of “College” in the given code language?

- (a) L20
- (b) T22
- (c) O5
- (d) V20
- (e) None of these

Directions (81-82): Study the following information carefully and answer the questions given below.

There are nine persons in a family of three generations. There are four married couples in the family. A is the mother of P who is husband of F. F has no sibling. G is the father-in-law of N. H is the grandson of T. T has only one child. B is the parent of N who is sister-in-law of F. P has no children. D is a male member.

Q81. How is P related to B?

- (a) Son
- (b) Father
- (c) Brother
- (d) Father-in-law
- (e) Son-in-law

Q82. If H is married to J, then how is J related D?

- (a) Daughter-in-law
- (b) Daughter
- (c) Mother
- (d) Mother-in-law
- (e) Sister in law



Directions (83-87): Study the following information carefully and answer the questions given below:

Six persons sit around a triangular table such that three of them sit at the middle of each side of the table and other three sit at each corner of table. The ones who sit at the corner of table face towards the center of table. The ones who sit at the middle side face outside the center of table. Each of them likes different subjects.

A sits second to the right of the one who likes computer. Only one person sits between E and the one who likes computer. C sits second to the right of B who likes English. E sits immediate right of D and immediate left of B. The one who likes Social studies sits at the middle side of the table. The one who likes Hindi sits immediate left of the one who likes Mathematics. A does not like Hindi. F sits second to the right of the one who likes Science.

Q83. Who among the following likes Social Studies?

- (a) The one who sits immediate left of E
- (b) D
- (c) The one who sits immediate right of F
- (d) A
- (e) None of these

Q84. Which of the following is not correctly matched?

- (a) A-Mathematics
- (b) D-Social studies
- (c) F-Computer
- (d) E-Hindi
- (e) All are correct

Q85. Who among the following is second to the left of the one who likes Hindi?

- (a) E
- (b) The one who likes Mathematics
- (c) D
- (d) The one who likes Computer
- (e) B

Q86. If A and E interchange their position, then who among the following sits second to the left of E?

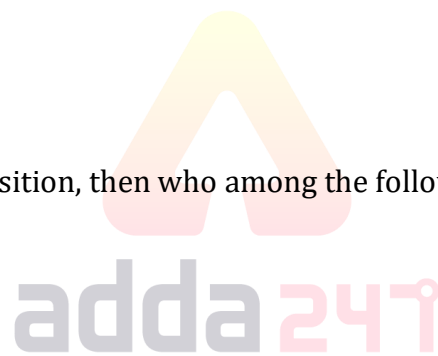
- (a) The one who likes Hindi
- (b) F
- (c) D
- (d) The one who likes English
- (e) None of these

Q87. Which of the following pair of persons are immediate neighbors of the one who like Computer?

- (a) A, E
- (b) D, A
- (c) A, C
- (d) D, C
- (e) B, A

Directions (88-90): Study the following information carefully and answer the questions given below:

A person starts to walk from point O towards east direction. After walking 10km he reaches point X and then turns left and walks for 15km to reach point Y. He now turns left and walks for 20km to reach point Z. He again turns left and walks for 30km and meets his friend at point A. He finally turns left and walks for 30km to reach his house at point B.



Q88. What is the total distance covered by the persons from point X to A?

- (a) 45km
- (b) 60km
- (c) 65km
- (d) 55km
- (e) None of these

Q89. If point S is 40km north of point B then what is the shortest distance between S and Y?

- (a) $10\sqrt{2}$ km
- (b) 10km
- (c) 20km
- (d) $20\sqrt{2}$ km
- (e) None of these

Q90. Four of the following five are alike in a certain way and hence form a group which of the following does not belong to that group?

- (a) B-Z
- (b) O-Z
- (c) X-A
- (d) B-Y
- (e) X-Z



Directions (91-93): In these questions, relationship between different elements is show in the statements. The statements are followed by conclusions. Study the conclusions based on the given statements and select the appropriate answer:

Q91.

Statements:

$M > Q > W > T = R \geq X < O = C$

Conclusion

I: $X \leq C$

II: $Q > X$

- (a) If only conclusion I is true
- (b) If only conclusion II is true
- (c) If either conclusion I or II is true
- (d) If neither conclusion I nor II is true
- (e) If both conclusions I and II are true

Q92.

Statements:

$R \geq O = B \geq M = S \leq W = D > L$

Conclusion

I: $B > S$

II: $S = B$

- (a) If only conclusion I is true
- (b) If only conclusion II is true
- (c) If either conclusion I or II is true
- (d) If neither conclusion I nor II is true
- (e) If both conclusions I and II are true

Q93.

Statements:

$Z \leq B < R \geq C = Q > D > L > E$

Conclusion

I: $R > D$

II: $E < Q$

- (a) If only conclusion I is true
- (b) If only conclusion II is true
- (c) If either conclusion I or II is true
- (d) If neither conclusion I nor II is true
- (e) If both conclusions I and II are true

Directions (94-98): Study the information carefully and answer the questions given below.

Nine boxes are placed one above other in a stack. Box A is placed above box B and more than five boxes are placed between them. Two boxes are placed between box A and box S. Box C placed just above box F. Box T is placed below box S and above box C. One box is placed between box S and box K. Box P is placed above box Q. Box P is not placed just above or below box K. More than two boxes are placed between Box P and box T.

Q94. Which of the following box is placed at topmost position of the stack?

- (a) P
- (b) A
- (c) K
- (d) F
- (e) None of these

Q95. Which of the following boxes is placed just above box C?

- (a) K
- (b) B
- (c) S
- (d) T
- (e) None of these

Q96. As many boxes are placed above box C as placed below box__?

- (a) F
- (b) K
- (c) Q
- (d) S
- (e) None of these

Q97. How many boxes are placed between box Q and Box F?

- (a) Four
- (b) Three
- (c) None
- (d) One
- (e) Two

Q98. Which of the following boxes is placed just below box K?

- (a) S
- (b) F
- (c) Q
- (d) T
- (e) None of these

Q99. Sanju starts walking towards north direction from point A and covers 5km. Now he turns left and walks for 4km, then he turns to the left and moves 6 km to reach final point. In which direction he is facing now?

- (a) North
- (b) West
- (c) South
- (d) South east
- (e) North east

Q100. How many words can be formed from the 3rd, 5th, 6th and 8th letter of a word 'TRANSACTION' by using each letter once in the word?

- (a) Two
- (b) One
- (c) None
- (d) Three
- (e) More than three



NRA-CET Ready

**BANK
MAHA PACK**

Live Class, Video Course,
Test Series, eBooks

Bilingual (with eBooks)
6+6 Months Validity

BOOKS

50+ BANK PO CLERK 2016-2021 PREVIOUS YEARS* Memory Based Papers Useful for IBPS, SBI, RRB, LIC & Other Bank Exams Edition 3.0 500+ Questions 6500+ Detailed Solutions of English & Reasoning	50+ बैंक पीओ/ क्लर्क 2016-2021 पिछले वर्षों की याददाश्त आधारित प्रश्नपत्र IBPS, SBI, RRB, LIC और अन्य बैंक परीक्षाओं के लिए Edition 3.0 300 प्रश्नों के साथ 6000+ विस्तृत हल	20+ SBI CLERK PRELIMS MOCK PAPERS Based on Latest Pattern 17 Prelims Mock Papers 2000+ Questions Detailed Solutions for better understanding 2100 Questions with 100% Solutions	A Complete Book of PUZZLE & SEATING ARRANGEMENT Useful for Banking & Insurance Examinations for IBPS, SBI, LIC, LIC & Others 1000+ Questions 3200+ Solutions	20+ IBPS CLERK PRELIMS MOCK PAPERS Based on Latest Pattern 20 Mock Papers 2000+ Questions Detailed Solutions for better understanding 2100 Questions with 100% Solutions	"THE CRACKER" BANK MAINS EXAMS Bank Exams for IBPS SBI RRB PO- Clerk 2000+ Questions 3500+ Solutions	COMPREHENSIVE GUIDE FOR INTELLIGENCE BUREAU ACIO GRADE-II 3500+ Questions Detailed Solutions
A COMPLETE BOOK OF DATA INTERPRETATION & ANALYSIS Useful for Banking & Insurance Examinations for IBPS, SBI, LIC, LIC & Others 2000+ Questions 1000+ Solutions	25+ IBPS RRB PO & CLERK PRELIMS MOCK PAPERS Based on Latest Pattern English Medium 2240 Questions with 100% Solutions 1000+ Questions 1000+ Solutions	Ace QUANT A Complete Guide for Quantitative Aptitude 1000+ Questions 1000+ Solutions	ऐस क्वान्ट एक पूर्ण गाइड क्वांटिटेटिव अप्टीट्यूड के लिए 1000+ प्रश्न 1000+ समाधान	Ace REASONING A Complete Guide for Reasoning 1000+ Questions 1000+ Solutions	ऐस रीजनिंग एक पूर्ण गाइड रीजनिंग के लिए 1000+ प्रश्न 1000+ समाधान	Ace BANKING & STATIC AWARENESS 1000+ Questions 1000+ Solutions
Ace IT OFFICER Professional Knowledge 1000+ Questions 1000+ Solutions	COMPUTER APTITUDE For Banking & Insurance Examinations 1000+ Questions 1000+ Solutions	BANK EXAMS INTERVIEWS A Guide to Crack Useful for SBI, IBPS, RRB, LIC, LIC & Other Bank Exams 1000+ Questions 1000+ Solutions	100+ SSC CGL TIER-I / PRELIMS Previous Years' Papers & Mock Tests Practice Book English Medium 1000+ Questions 1000+ Solutions	A Comprehensive Guide for RRC GROUP 'D' 4000+ Questions 1000+ Solutions	A COMPLETE BOOK OF LOGICAL REASONING Useful for IBPS SBI LIC Assistant & Other Exams 550+ Questions 550+ Solutions	"THE CRACKER" PRACTICE BOOK FOR GEOMETRY Useful for SSC CGL CPO CHSL & Other Exams 800+ Questions 350+ Detailed Solutions
उत्तर प्रदेश पुलिस UP Police Recruitment 2019 (M & ASI) 3500+ Questions 100% Solutions	A Comprehensive Guide for DELHI POLICE CONSTABLE Useful for UP Police, Bihar Police, Forest Guard & Other Exams 3000+ Questions 3000+ Solutions	50+ SSC CGL TIER - I MOCK PAPERS PRACTICE BOOK Useful for SSC CGL, CHSL, and CPO 500+ Questions 500+ Solutions	20+ SSC CGL TIER-I PREVIOUS YEAR MOCK PAPERS PRACTICE BOOK Useful for SSC CGL, CHSL & CPO 200+ Questions 200+ Solutions	"THE CRACKER" PRACTICE BOOK FOR ALGEBRA & NUMBER SYSTEM 1300+ Questions 1300+ Solutions	"THE CRACKER" PRACTICE BOOK FOR MENSURATION Useful for SSC CGL CPO CHSL & Other Exams 850+ Questions 850+ Solutions	Ace SSC ARITHMETIC 1000+ Questions 1000+ Solutions
ऐस एसएससी अंक गणित 1000+ Questions 1000+ Solutions	Ace SSC ENGLISH LANGUAGE & COMPREHENSION BOOK 1000+ Questions 1000+ Solutions	Ace SSC ADVANCED MATHS 1000+ Questions 1000+ Solutions	ऐस एसएससी एवरेसिंग मैथ 1000+ Questions 1000+ Solutions	Ace SSC GENERAL AWARENESS History Geography Polity Economics Science Current Affairs Banking 1000+ Questions 1000+ Solutions	ऐस एसएससी सामान्य जागरूकता इतिहास भूगोल राजनीति अर्थशास्त्र विज्ञान वर्तमान घटनाएं बैंकिंग 1000+ प्रश्न 1000+ समाधान	Ace SSC GENERAL INTELLIGENCE & REASONING 1000+ Questions 1000+ Solutions

Visit: adda247.com
 For any information, mail us at support.publication@adda247.com